

PART OF THE SE 1/4, SEC. 5, T.5N., R.1W., S.L.B. & M.
CITY CENTER AT SOUTH OGDEN COMMERCIAL SUBDIVISION

LOTS 3-6

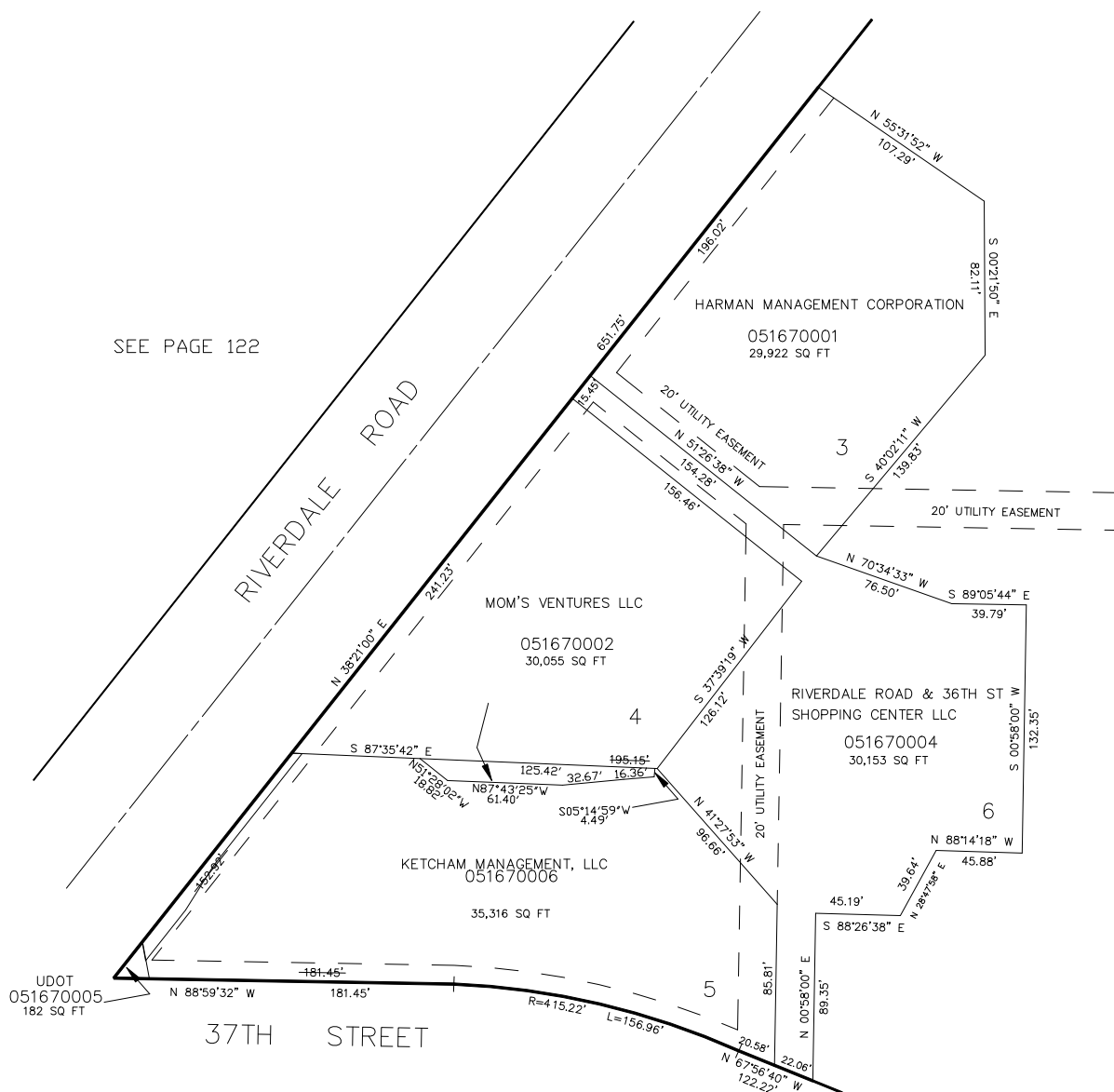
TAXING UNIT: 298

IN SOUTH OGDEN CITY

SCALE 1" = 50'

SEE PAGE 122

SEE PAGE 166



10' UTILITY & DRAINAGE EASEMENTS EACH
SIDE OF PROPERTY LINES AS INDICATED
BY DASHED LINES EXCEPT AS OTHERWISE
SHOWN.

FOR COMPLETE ENG DATA SEE
ORIGINAL DEDICATION PLAT IN
BOOK 40, PAGE 92 OF RECORDS.

SEE PAGE 129

FOR TAX PURPOSES ONLY